

Door Seal Replacement Guide

Easy Steps to Remove & Replace a Fridge Door Seal

Have you noticed your fridge running more frequently or not feeling as cold as normal? One of the most common culprits is a damaged rubber seal (gasket) around the outside of your fridge door. A door seal replacement is one of the easiest repairs for a fridge, and you can do it on your own. Keep reading, and we'll help walk you through everything you need to know for removing the old gasket and installing a brand new one.

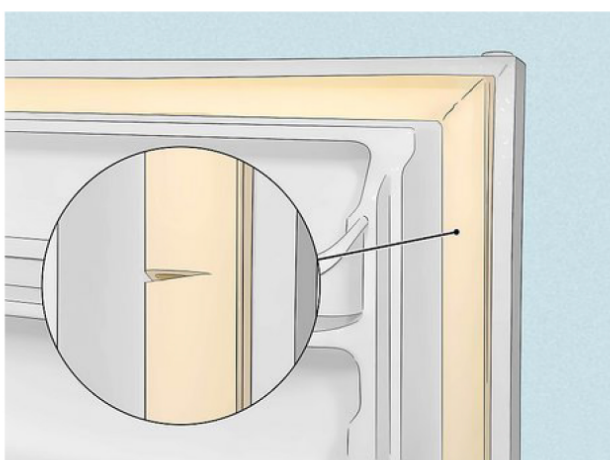
Things You'll Need

- ☐ Large flat area at room temperature for the door seal to regain its shape
- ☐ Hair dryer

Things You Should Know

- You may need to allow a day or 2 for the door seal to regain its shape after it's been unpacked
- While the fridge door is open during the seal replacement, switch the fridge off at the mains
- A perfect seal ALL ROUND the door is essential for 100% efficiency and to protect any parts warranty on other components that might be in place. If the seal is faulty, warranty will be void.

Knowing When to Replace Door Seals



Inspect your fridges' door seal for damage or tears.

Open your fridge and look at the rubber seal around the perimeter of the door. If you notice any large cracks or holes in the rubber, it's time for a replacement.

- If you notice mould on the door seal, it either needs cleaning or it may also indicate damage to the seal that isn't readily visible.
- Door seals are more important than you might think. They keep cold air in and warm air out of the refrigerator. Damage to a door seal allows warm air into the fridge which will make the cooling equipment work harder and possibly fail.

See next door seal check on Page 2

Checking the Door Seal on a Corner Fridge

Switch off the fridge, remove the contents and the shelves.
Use an old towel on the floor to protect the surface, then step into the fridge and close the door.

Check all round the door seal from inside the fridge for daylight.

If you can't see daylight, the seal is working properly.

If you can see daylight, inspect the seal in that area for damage.

If you cannot see any obvious damage, the seal may have become mis-shapen. Try using a hair drier on low heat setting to help you pull and tease the door seal back into shape.

Step in to the fridge, close the door, and check again.

If you cannot achieve a perfect all round seal, purchase and fit a new seal.



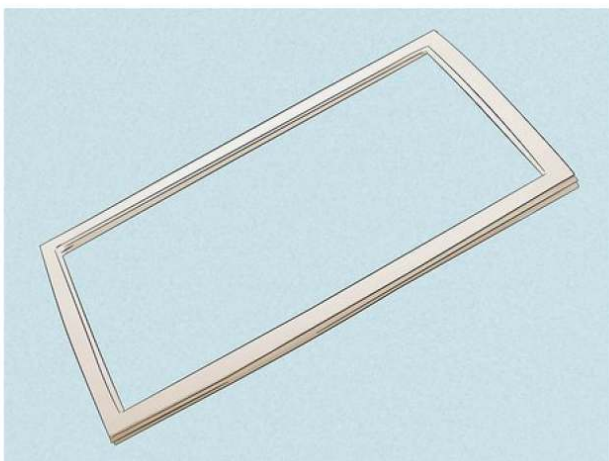
Unpacking and preparing a new door seal

During packaging and transportation, the door seal may become mishapen. Here's what to do:

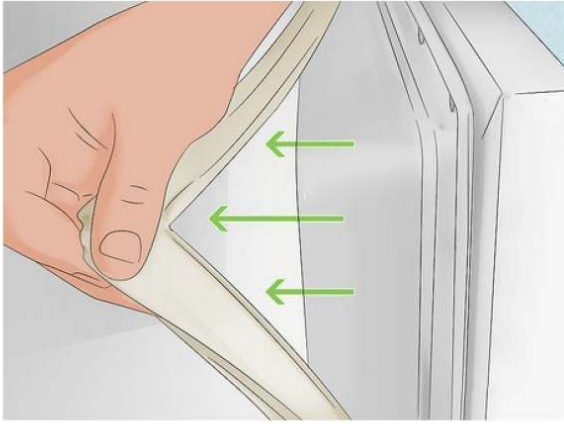


In a room at room temperature, lay the door seal flat on the floor or a large table.

Allow the seal to warm up over a day or two in order for the rubber to relax and return to it's original shape.



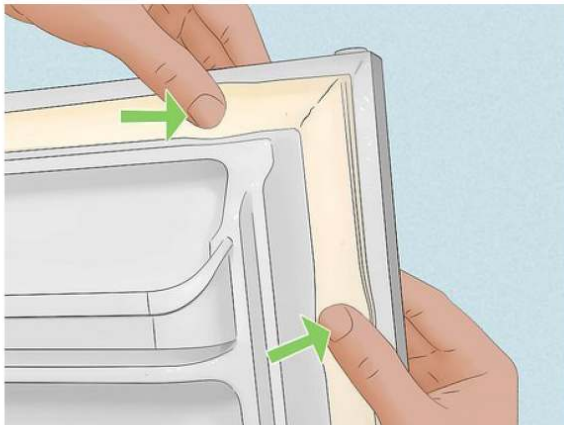
Using gentle heat from a hair drier can help remove bends and kinks from a brand new fridge door seal.



Remove the existing door seal.

Start at the top corner of the seal and pull the seal up and towards you (away from the door).

While holding the door steady, the seal should pull out of the channel. Once started, continue to pull out of the channel until the seal is out, usually in one piece.

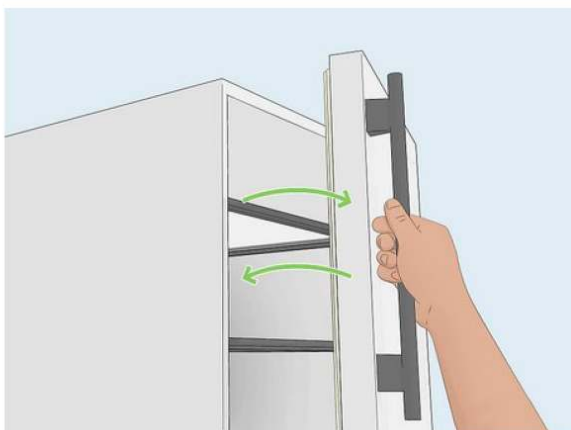


Install the new door seal.

Make sure the new seal is at room temperature to help with the installation.

Start at the top and press the seal into the channel, gently and firmly persuade the top left and right corners into place first, then press the seal in top centre, and work outwards towards the corners. Repeat this sequence at the bottom of the door, and repeat the process along each side.

When the seal is new, try using a hair drier on a low setting to ease out any kinks.



Check the new seal is working 100%

Step inside the fridge and close the door.

Check all round the door and door frame for signs of daylight. If there is NO daylight visible around the whole door, then the seal is making a good airtight seal and the job is complete.

!! Note: The door seal has magnetic strips to make a good seal with the door frame. It may take 2 - 3 days for the magnetic strips to re-activate after packaging and feel like the door is closing or 'gripping' properly.

If you see any signs of daylight, check the seal in that area and tease it back into shape. Keep checking the seal from inside the fridge until the seal is 100% flush to the door frame.

Now is a good time to clean the fridge and the shelves, replace the shelves and then switch on the fridge. Dispose of the original door seal in accordance with your local waste authority regulations.